



[www.wrightcomputers.net](http://www.wrightcomputers.net)

Snellville, Ga 30078

1.800.394.2152

770.469.1818

(fax) 770.469.0518

---

Wright Computer Services, Inc. strives to help our client base run their day-to-day operations efficiently by providing leading edge software and friendly, helpful support. We also try to keep our clients apprised of industry information.

Please peruse our first quarterly email newsletter for 2010 and let us know what you think. Suggestions and ideas are certainly welcome.

*Kay Horton*

---

**Upcoming Training:** One of our new endeavors is Webinar training. This will allow us to focus on specific areas of interest in small time increments. This method of training will also allow us to offer the training for larger groups during a single training session. This will also allow the Housing Authorities to participate in training, yet keep their costs down.

Managing and Setting up ODBC	-- May 5, 2010
Create Reports w/ ODBC	-- May 11, 2010
Section 8 Voucher Tracking	-- May 19, 2010
General Ledger Reporting from ODBC & WCS-System	-- June 23, 2010
SAGIS Tracking & Reporting	-- July 13, 2010
IMC-PIC Website Navigation / Reporting	-- TBA

Please look for email reminders for these Webinars, along with upcoming regional workshops to be offered this year.

---

**VASH – Veterans Affairs Supportive Housing:** We have had several clients ask about processing and tracking for VASH over the last several months. Please note that our system handles that very easily. We suggest you use a unique program number for these vouchers for easy distinction. Also be sure to enter VASH as a special program for reporting on your 50058s. If you are doing this, and want it to further prompt you for the PHA Code that goes along with this VASH

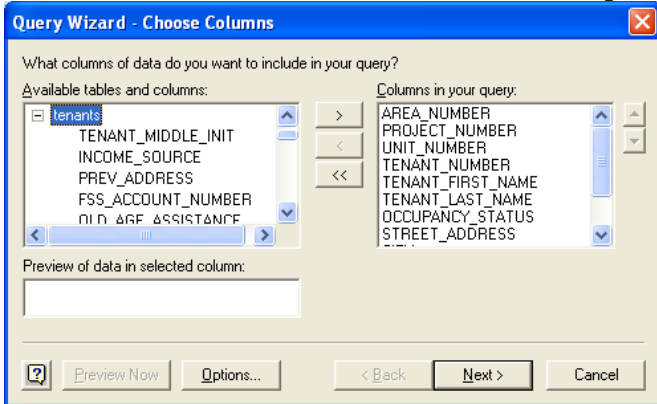
voucher, please simply email us at [support@wrightcomputers.net](mailto:support@wrightcomputers.net) and we will make that an automatic option.

For further explanation of VASH, please visit this website: <http://www.hud.gov/offices/pih/programs/hcv/vash>

For the attachment to the portability form in connection with this program, you can get it from our website, or download it from: <http://www.hud.gov/offices/pih/programs/hcv/vash/docs/pdf>

*Lisa C. Bruce*

## Exciting Reporting and E-Mail Capabilities and EASY to USE: WCS now offers both ODBC and E-mail capability.



With ODBC you have the capability of creating a Report in Excel quickly and then examining your data like never before to come up with custom reports or mailings. WCS will be offering several ODBC Webinars to go over all the possibilities and the ease to which your agency could be utilizing ODBC tables and capabilities.



AREA_NUMBER	PROJECT_NUMBER	UNIT_NUMBER	TENANT_NUMBER	TENANT_FIRST_NAME	TENANT_LAST_NAME	OCCUPANCY_STATUS	STREET_ADDRESS
1	1 000A	1	1 PAUL	WRIGHT	2	1	100 MAIN STREET
2	1 000A	1	2 MARIYANNAELLE	GOOGA	1	1	100 MAIN STREET
3	1 000B	1	1 CHRISTINE	GALLAGHAN	1	1	200 MAIN STREET
4	1 000B	1	2 PAUL	WRIGHT	2	2	2-8 MTH VIEW HC
5	1 000B	2	1 MARY	WRIGHT	1	1	2-8 MTH VIEW HC
6	1 000B	2	2 MARY	WRIGHT	1	1	2-8 MTH VIEW HC
7	1 000B	2	3 PAUL	WRIGHT	1	1	2-8 MTH VIEW HC
8	1 000B	2	4 GEORGE	WRIGHT, JR.	2	2	2-8 MTH VIEW HC
9	1 000B	2	5 GEORGE	WRIGHT, JR.	1	1	2-8 MTH VIEW HC
10	1 000A	3	1 MARSHALL	BRICE	2	2	3-4 MTH VIEW HC
11	1 000A	4	2 GEORGE	WRIGHT, JR.	1	1	3-4 MTH VIEW HC
12	1 000B	4	3 OCTAVIA	SCOTT	1	1	3-8 MTH VIEW HC
13	1 000B	5	4 CLARK	KENT	1	1	3-8 MTH VIEW HC
14	1 000A	4	5 CHANCEY	HARRIS	1	1	4-4 MTH VIEW HC
15	1 000A	5	6 MONICA	LEWIS/JOY	1	1	4-4 MTH VIEW HC
16	1 000A	6	7 JOHN	WRIGHT	1	1	4-4 MTH VIEW HC
17	1 000A	7	8 GEORGE	WRIGHT	1	1	4-4 MTH VIEW HC
18	1 000B	1	1 ELLA	MCNAMARI	1	1	4-8 MTH VIEW HC
19	1 000B	2	2 MARLE	WRIGHT	1	1	4-8 MTH VIEW HC
20	1 000A	2	3 DWANE	BUTLER	1	1	5-4 MTH VIEW HC
21	1 000A	3	4 BETTY	WALLAVSON	1	1	5-4 MTH VIEW HC
22	1 000A	4	5 GEORGE	WRIGHT, JR.	1	1	5-4 MTH VIEW HC
23	1 000B	2	1 DORCASH	SIMPSON	1	1	5-8 MTH VIEW HC
24	1 000B	4	2 BETTY	WALLAVSON	2	2	5-8 MTH VIEW HC
25	1 000B	5	3 GEORGE	WRIGHT	2	2	5-8 MTH VIEW HC
26	1 000B	6	4 MICHAEL/ALINE	WRIGHT	1	1	5-8 MTH VIEW HC
27	1 000C	5	5 ROBERT	SIAMNA	2	2	5-8 MTH VIEW HC
28	1 000C	6	6 ROBERT	SIAMNA	2	2	5-8 MTH VIEW HC
29	1 000C	7	7 GEORGE	WRIGHT	2	2	5-8 MTH VIEW HC
30	1 000C	8	8 ANNE	CLARK	1	1	5-8 MTH VIEW HC

Did you ever wonder why Direct Deposit still takes about the same amount of time to process as a normal check run? You still have to inform Owners / Employees how much they are getting paid and for what. Why not use E-mail and let the system automatically send that out for you and actually save you time. To learn more about E-mail capabilities contact WCS and stop wasting time folding, stamping and mailing out Direct Deposit Vouchers and let the system take care of the work for you.

*Paul G Wright*

## Software Features:

There are several new and exciting options in our WCS-System package. We are working to upgrade all current dL4 clients to our latest version so that they can enjoy these newest features. We will be contacting you soon to go through a demo of these new features and to discuss upgrading.

Also, for all our clients, we encourage you to check out our general features summary on our website. This will give you a summary of the main features for our software modules.

## **IMC-PIC NEWS:**

There is a mid-April scheduled update that is supposed to address the following PIC issues.

- Correction of error 4282 on Type 13 transmissions (HQS Annual Inspection) where field 5b should upload as empty, and yet it was returning an error.
- Correction of having the Type 12 transmissions (annual flat rent updates) appear to wipe out the family members stored from the previous A/R. It should now continue to retain that information.
- If you have read Notice 2010-6, it is outdated and not accurate. Please disregard.
- Their focus for this release is on the building and unit classifications. The default is occupied or vacant, but the User can sign on and change that designation if desired for better clarification of that unit's use. These designations basically allow for clarifying the vacancy. Once you make the change, if it is user allowed, the change will take effect immediately. If it is a change that requires approval, your regional office will be looking at and then approving or disapproving. For further detail, you may review the Job-Aide that we will be posting on our website, but please note that it is JUST a draft and is subject to change.
- During our latest conference call, the development team stressed that it is important for clients to make the correct distinction between an employee or security personnel required to live in your developments, and those that simply do as a matter of course. The ones that are required should be so marked and are NOT to have 50058s sent. You will, of course, have to make sure that unit has been properly identified as such in your PIC inventory.
- If you are using the special code fields on the 50058, and then attempting to retrieve information from the AD-HOC section of the PIC website, please note that they ONLY retain special codes 1 and 2, though the 50058 allows for up to 5.
- They are also working on improving the ability to upload your PIC file in xml if desired. That format style takes up half again as much room, and until such time that we deem efficient for our clients, we will continue to upload in ASCII text file format.
- Finally, there is scheduled to be a big release in September – details to follow as they formulate.

---

**PLEASE remember to regularly check our website for updates, schedules, releases, and links to some of our business partners.**

**\*\* MARK YOUR CALENDAR for the WCS User's Group annual meeting\*\*  
August 11-13, 2010  
Murfreesboro, TN**